

# Russell Taylors

E-WARRANTY



SCAN HERE

[www.russelltaylors.co.uk](http://www.russelltaylors.co.uk)

**USER MANUAL V11**



## **Safety Instructions**

**Warning : Basic safety precautions should always be observed when using an electrical appliance, including the following to reduce the risk of fire, electrical shock or injury.**

- Store the vacuum in a dry place out of reach of children.
- The appliance is not intended for use by persons (including children) with reduced physical, sensory or mental capabilities, or lack of experience and knowledge, unless they have been given supervision or instruction concerning the use of this appliance by a person responsible to their safety.
- Children must be supervised to ensure that they do not play with the appliance.
- Use only the attachments provided in the packaging. Any misuse or use of any accessory or attachment that was not provided by Russell Taylors may present a risk of personal injury.
- Keep the appliance and accessories away from hot surfaces.
- Do not block the appliance openings or hinder air flow. Keep the openings free of any objects including dust, lint, clothing and fingers.

## **Electrical Safety**

- Only use the battery and charger supplied in the original packaging, The appliance is only to be used with the power supply unit provided in the packaging.
- Do not modify the charger.
- The charger has been designed for a specific voltage. Always check the voltage is same as what is stated on the rating plate.
- Before using, check if the charger cord has any signs of damage.
- Do not abuse the charger cord.
- Do not wrap the cord around the charger when storing.
- Keep the charger cord away from hot surfaces and sharp edges.

## **Battery Safety**

- This appliance includes Li-ion batteries. Do not expose it to high temperature or it may explode.
- Lithium-ion batteries perform best when they are kept at a moderate state of charge and are not allowed to discharge

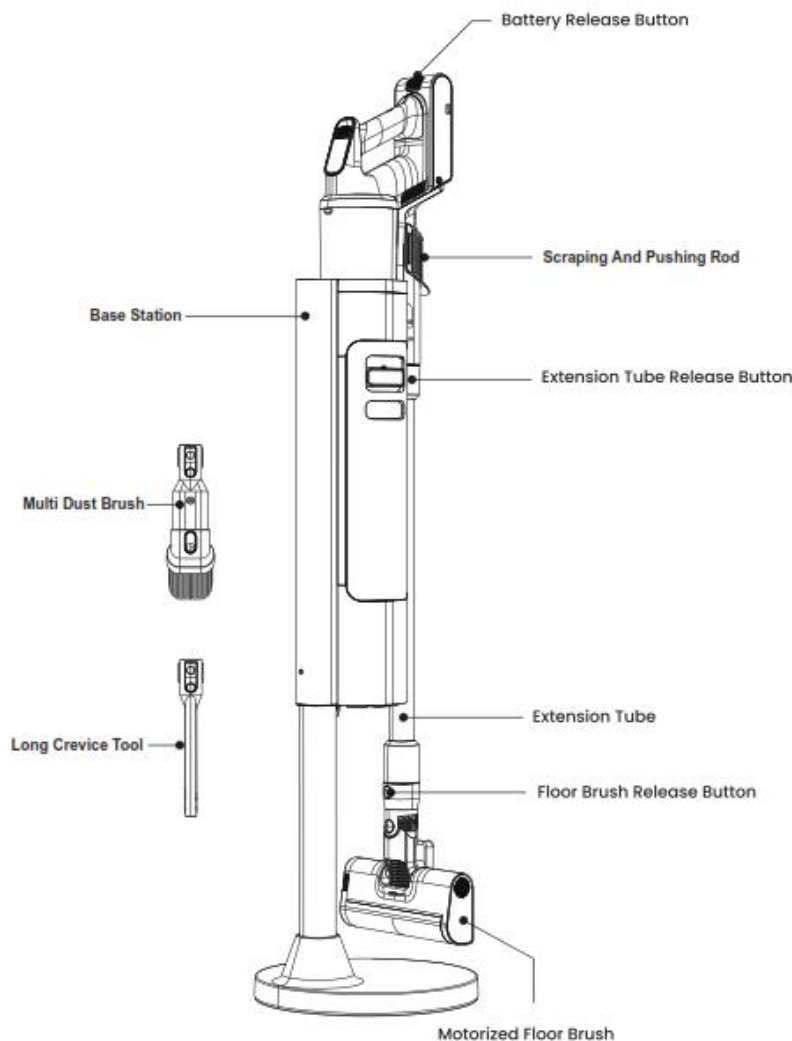
(Battery level reaches 0%). To increase the lifespan of the battery pack, do not allow the battery to reach 0% and recharge the battery regularly.

- The batteries are not replaceable. If you have a defective battery pack, please contact the Russell Taylors service team at [support@russelltaylors.com](mailto:support@russelltaylors.com).

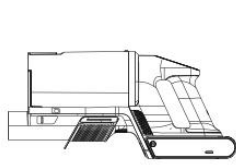
### Product Warranty

- This appliance has been designed for domestic dry vacuum cleaning only. Any evidence of commercial use will result in void of warranty.
- The vacuum cleaner is backed by a 2-year manufacturing warranty (The battery pack is covered by a 6 month warranty).

### Product Diagram



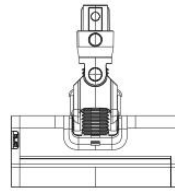
## Package Content



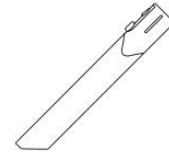
Main Body



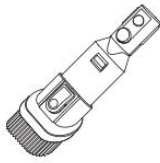
Extension Tube



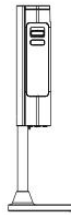
Motorized floor brush



Long Crevice Tool



Multi Dust Brush



Base Station

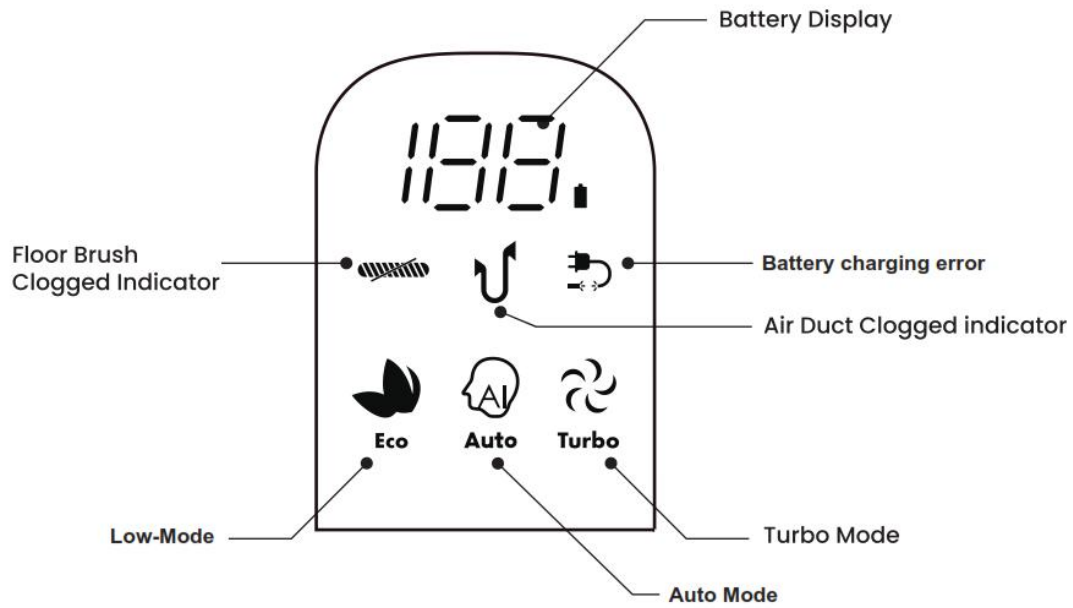


Dust Bag

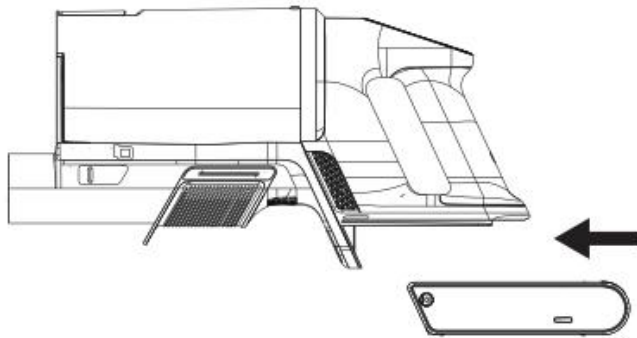


User Manual

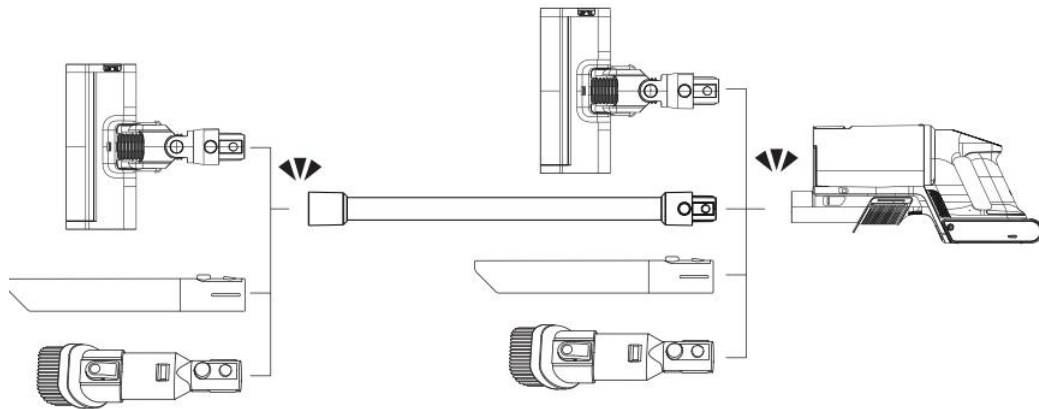
## Display Screen Indication



## Assembly & Usage

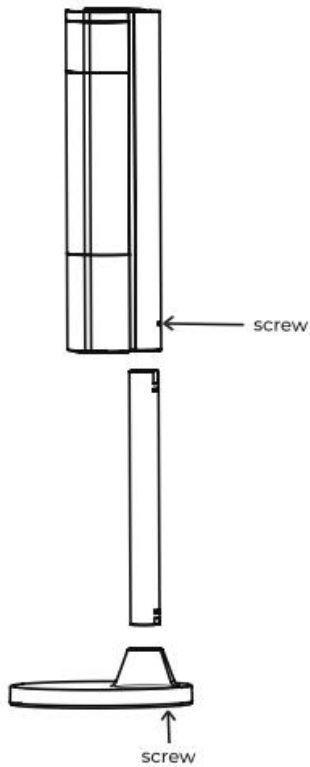


## Installing accessories



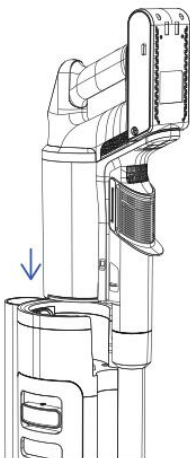
### Installing the cleaning station

- Insert the connecting pole to the cleaning station. Make sure the area on the pole matches accordingly.
- Tighten the screw accordingly.



### Base Station

- Place the vacuum cleaner into the dust collection station. After the station detects the vacuum, it will automatically collect the dust.
- The dust station will automatically shut down after 20 seconds.



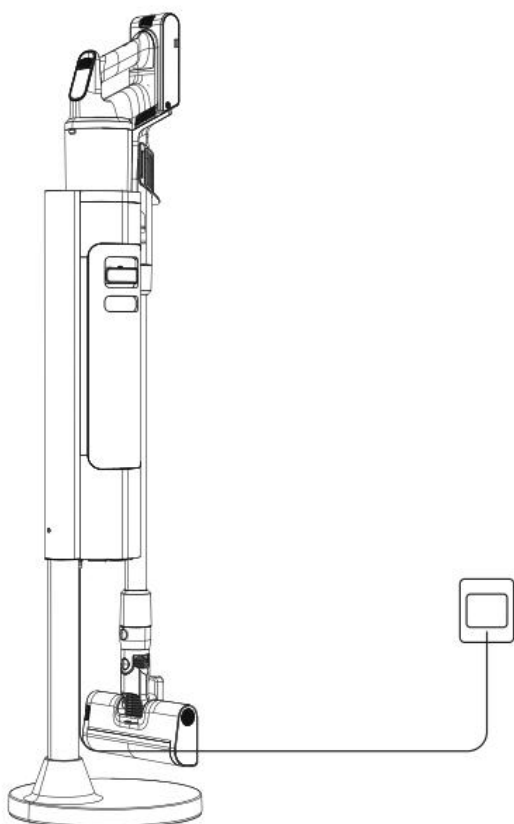
## Operating

- Press the power button on the vacuum cleaner to switch it on. Press the button again to switch it off.



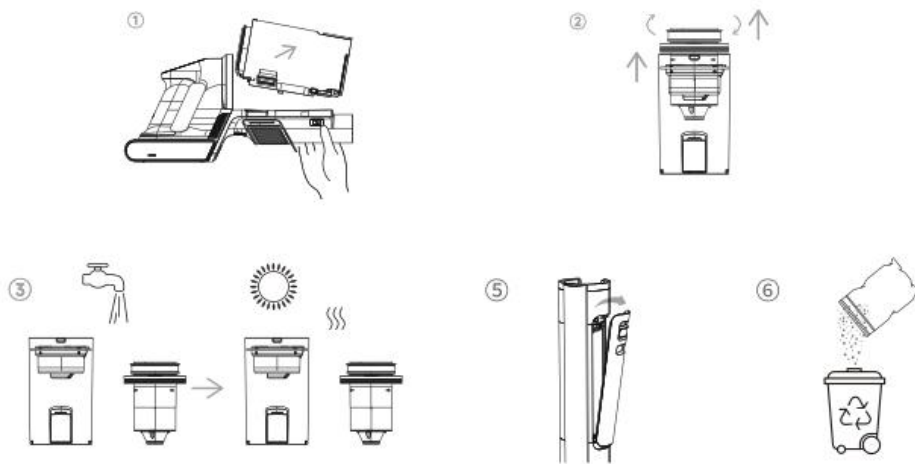
## Charging Method

- While operating the vacuum, when the battery level reaches below 10% the display will begin to flash. This is an indicator that the vacuum needs to be charged immediately to avoid affecting its battery health.
- The vacuum is charged on the dust collection station. After its fully charged, the battery level will display at 100% and it will stop charging automatically to avoid damage to the battery health from overcharging.

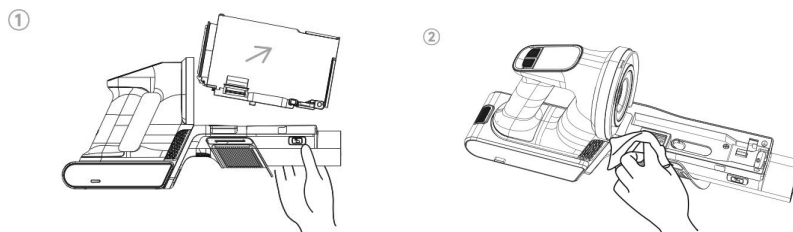


## Maintenance

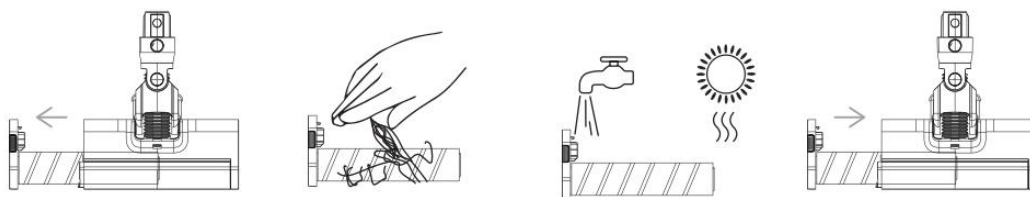
- Cleaning the vacuum regularly will prolong its service life span.
- When cleaning the main body, always ensure the device is switched off and wipe it with a clean damp cloth.
- When emptying the dust canister, press the dust cup release button to empty the canister. Ensure that the dust does not exceed the MAX line as this will affect the suction performance of the vacuum and may damage the motor.
- When cleaning the filter, press and hold the dust cup release button on the right side of the handle to remove the dust cup.



- The filter case and HEPA filter should be cleaned every two weeks. A dirty and blocked HEPA filter will have a negative effect on the vacuum suction and may damage the motor.
- To clean the dust sensor area, remove the dust cup and wipe the sensor area with a damp cloth.



- After extended use, the brush head may be tangled with hair or other similar build up. It is recommended to clean the roller brush regularly to maintain efficient suction and product performance.



## Product Troubleshooting

<b>Problem</b>	<b>Possible Cause</b>	<b>Solution</b>
Weak suction	Filter is blocked	Clean or replace filter
	The tube is blocked	Clean the tube
Unable to turn on	The switch does not work	Contact the service centre
	Filter is blocked	Clean or replace the filter
	Damaged battery	Contact the service centre
Floor brush is not moving	Brush entangled with hair	Remove hair from the roller
	Floor brush is damaged	Contact the service centre
Battery is not charging	Loose charging port	Reconnect the charger
	Base station or battery is damaged	Contact the service centre
Auto shutdown after powering on	Filter is blocked	Clean or replace the filter
	Short circuit of the extension tube	Contact the service centre